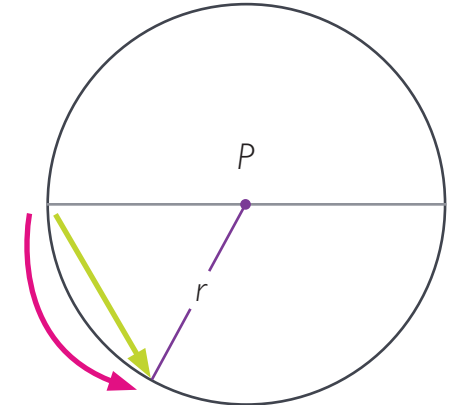


Vi TPLO Rotation Reference Chart

Tibial plateau angle (degrees)		10	11	12	13	14	15	16	17	18	19	20	21	22	23	24	25
Linear translation (mm) required to achieve post-op TPA of 5 degrees																	
Blade size (mm)	12	1	1.3	1.5	1.7	1.9	2.1	2.3	2.5	2.7	2.9	3.2	3.4	3.6	3.8	4	4.2
	15	1.3	1.6	1.8	2.1	2.4	2.6	2.9	3.2	3.4	3.7	3.9	4.2	4.5	4.8	5	5.3
	18	1.6	1.9	2.2	2.5	2.8	3.1	3.5	3.8	4.1	4.4	4.7	5.1	5.4	5.7	6	6.3
	21	1.8	2.2	2.6	3	3.3	3.7	4	4.4	4.8	5.2	5.5	5.9	6.3	6.7	7	7.4
	24	2.1	2.5	3	3.4	3.8	4.2	4.6	5	5.5	5.9	6.3	6.7	7.2	7.6	8	8.4
	27	2.4	2.8	3.3	3.8	4.2	4.7	5.2	5.7	6.2	6.6	7.1	7.6	8.1	8.6	9	9.5
	30	2.6	3.1	3.7	4.2	4.7	5.2	5.8	6.3	6.8	7.4	7.9	8.4	9	9.5	10	10.6
	34	3	3.6	4.2	4.8	5.4	5.9	6.5	7.1	7.7	8.3	9	9.6	10.2	10.8	11.4	12

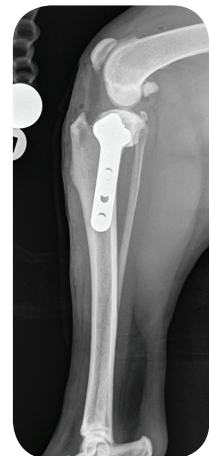


r = radius (size) of the blade
 Pink = physical rotation required
 Green = rotation straight line translation in mm

Tibial plateau angle (degrees)		26	27	28	29	30	31	32	33	34	35	36	37	38	39	40	
Linear translation (mm) required to achieve post-op TPA of 5 degrees																	
Blade size (mm)	12	4.4	4.6	4.9	5.1	5.3	5.5	5.8	6	6.2	6.4	6.7	6.8	7.1	7.3	7.6	
	15	5.6	5.8	6.1	6.4	6.7	6.9	7.2	7.5	7.8	8	8.3	8.6	8.9	9.2	9.5	
	18	6.7	7	7.3	7.7	8	8.3	8.6	9	9.3	9.6	10	10.3	10.7	11	11.4	
	21	7.8	8.2	8.5	8.9	9.3	9.7	10.1	10.5	10.9	11.3	11.6	12	12.4	12.8	13.2	
	24	8.9	9.3	9.8	10.2	10.6	11.1	11.5	12	12.4	12.9	13.3	13.8	14.2	14.7	15.1	
	27	10	10.5	11	11.5	12	12.5	13	13.5	14	14.5	15	15.5	16	16.5	17	
	30	11.1	11.7	12.2	12.8	13.3	13.9	14.4	15	15.5	16.1	16.6	17.2	17.8	18.3	18.9	
	34	12.6	13.2	13.8	14.5	15.1	15.7	16.3	17	17.6	18.2	18.9	19.5	20.1	20.8	21.4	



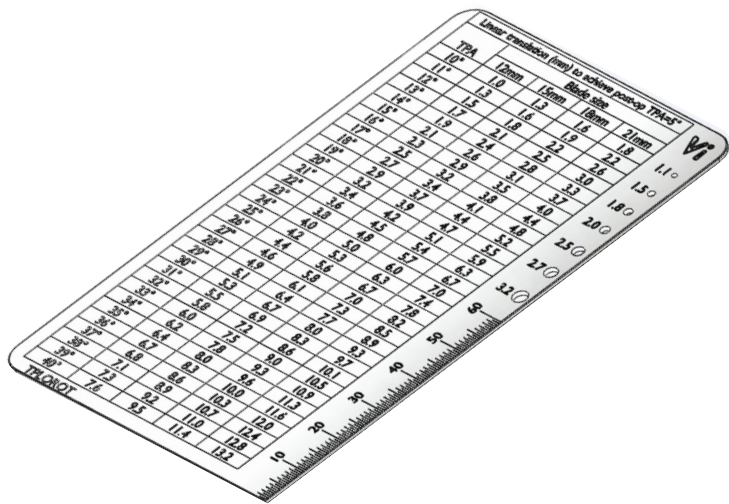
Pre-op



Post-op



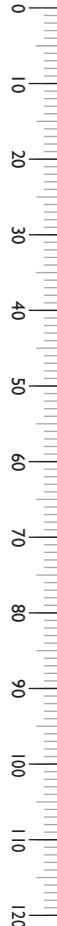
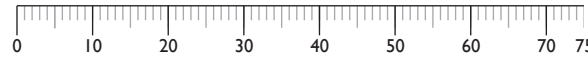
Vi TPLO Rotation Chart



The TPLO rotation chart overleaf is also available as a double sided stainless steel chart, incorporating a drill gauge and ruler as shown.

Vi Product Code

TPLOROT TPLO Rotation Chart



Vi	Linear translation (mm) to achieve post-op TPA=5°				
	TPA	Blade size			
		24mm	27mm	30mm	34mm
○ 1.1	10°	2.1	2.4	2.6	3.0
	11°	2.5	2.8	3.1	3.6
○ 1.5	12°	3.0	3.3	3.7	4.2
	13°	3.4	3.8	4.2	4.8
○ 1.8	14°	3.8	4.2	4.7	5.4
	15°	4.2	4.7	5.2	5.9
○ 2.0	16°	4.6	5.2	5.8	6.5
	17°	5.0	5.7	6.3	7.1
○ 2.5	18°	5.5	6.2	6.8	7.7
	19°	5.9	6.6	7.4	8.3
○ 2.8	20°	6.3	7.1	7.9	9.0
	21°	6.7	7.6	8.4	9.6
○ 3.2	22°	7.2	8.1	9.0	10.2
	23°	7.6	8.6	9.5	10.8
○ 3.6	24°	8.0	9.0	10.0	11.4
	25°	8.4	9.5	10.6	12
○ 4.0	26°	8.9	10.0	11.1	12.6
	27°	9.3	10.5	11.7	13.2
○ 4.5	28°	9.8	11.0	12.2	13.8
	29°	10.2	11.5	12.8	14.5
○ 5.0	30°	10.6	12.0	13.3	15.1
	31°	11.1	12.5	13.9	15.7
○ 5.5	32°	11.5	13.0	14.4	16.3
	33°	12.0	13.5	15.0	17.0
○ 6.0	34°	12.4	14.0	15.5	17.6
	35°	12.9	14.5	16.1	18.2
○ 6.5	36°	13.3	15.0	16.6	18.9
	37°	13.8	15.5	17.2	19.5
○ 7.0	38°	14.2	16.0	17.8	20.1
	39°	14.7	16.5	18.3	20.8
○ 7.5	40°	15.1	17.0	18.9	21.4

TPLOROT

Vi	Linear translation (mm) to achieve post-op TPA=5°				
	TPA	Blade size			
		12mm	15mm	18mm	21mm
○ 1.1	10°	1.0	1.3	1.6	1.8
	11°	1.3	1.6	1.9	2.2
○ 1.5	12°	1.5	1.8	2.2	2.6
	13°	1.7	2.1	2.5	3.0
○ 1.8	14°	1.9	2.4	2.8	3.3
	15°	2.1	2.6	3.1	3.7
○ 2.0	16°	2.3	2.9	3.5	4.0
	17°	2.5	3.2	3.8	4.4
○ 2.5	18°	2.7	3.4	4.1	4.8
	19°	2.9	3.7	4.4	5.2
○ 2.7	20°	3.2	3.9	4.7	5.5
	21°	3.4	4.2	5.1	5.9
○ 3.2	22°	3.6	4.5	5.4	6.3
	23°	3.8	4.8	5.7	6.7
○ 3.6	24°	4.0	5.0	6.0	7.0
	25°	4.2	5.3	6.3	7.4
○ 4.0	26°	4.4	5.6	6.7	7.8
	27°	4.6	5.8	7.0	8.2
○ 4.5	28°	4.9	6.1	7.3	8.5
	29°	5.1	6.4	7.7	8.9
○ 5.0	30°	5.3	6.7	8.0	9.3
	31°	5.5	6.9	8.3	9.7
○ 5.5	32°	5.8	7.2	8.6	10.1
	33°	6.0	7.5	9.0	10.5
○ 6.0	34°	6.2	7.8	9.3	10.9
	35°	6.4	8.0	9.6	11.3
○ 6.5	36°	6.7	8.3	10.0	11.6
	37°	6.8	8.6	10.3	12.0
○ 7.0	38°	7.1	8.9	10.7	12.4
	39°	7.3	9.2	11.0	12.8
○ 7.5	40°	7.6	9.5	11.4	13.2

TPLOROT

Scaled drawings when printed 1:1 @A4